

Centre for Mission & Ministries
Prospectus



St Patrick's
Pontifical University



Contents

Welcome	3
Why choose St Patrick's Pontifical University?	4
Why study with us?	6
Maynooth – The perfect town for study	8
What our Alumni think	10
Centre for Mission & Ministries	13

Our Programmes

Higher Diploma in Theological Studies (Blended Learning)	15
Diploma in Church Music	16
Master's in Liturgical Music	17
Diploma in Youth Ministry and Spirituality	18
Pastoral Liturgy Diploma /Higher Diploma (Blended Learning)	19
Higher Diploma in Christian Communication and Media Practice	20
Diploma in Pastoral Theology	21
Higher Diploma in Pastoral Theology	22
Master's in Theology (Pastoral Theology)	23
Higher Diploma in Pastoral Theology (Healthcare Chaplaincy)	24
Master's in Theology (Pastoral Theology, Healthcare Chaplaincy)	25
Professional Certificate/Post Graduate Certificate in Catholic Religious Education and Theological Studies	26
Diploma in Diaconate Studies	27
Collaborative Partners' Programmes	28
Aspal	29

Student Support	30
Scholarships	31
Applying to us	32



Welcome

St Patrick's Pontifical University, Maynooth is a specialised university focusing on Theology and Philosophy at undergraduate, postgraduate and professional programmes level. In addition to domestic students, each year, students from all over the world come to study here. Some come from neighbouring EU countries such as Germany, France and Poland, while others come from further afield including the United States, Asia and Africa.

The quality of the teaching, the academic staff, and the facilities ensure an education at the highest level, offering students every opportunity to thrive in their chosen careers. Our programmes provide options that allow students to prepare for a wide range of careers such as in pastoral care, developmental work, education or in academia. As a student of St Patrick's Pontifical University, you will be joining this international community of students and leading academics carrying forward over 225 years of tradition in the highest-quality teaching and research.

Maynooth is renowned across the globe as a centre of expertise in Theology and Philosophy. The town of Maynooth and our campus are extensions of one another ensuring students have access to all required services and facilities within a short stroll.

In response to challenges of equipping the people of God to minister in a changing environment, we have established our Centre for Mission & Ministries. This centre continues to evolve and expand in terms of academic output and programme choice. At its core, this Centre is actively enabling new models of lay leadership within the modern church. Our programmes cover a range of needs from Liturgical Music to Pastoral Theology, Healthcare Chaplaincy, Media and Communications, Liturgy, Church Music and Youth Ministry.



This prospectus gives you a brief flavour for each discipline. I would encourage you to make direct contact with us and in particular the relevant programme co-ordinator who will be delighted to talk you through the various options and opportunities that lie ahead whichever discipline is of interest to you.

Rev Prof Michael Mullaney, President

Why choose St Patrick's Pontifical University



Discover enriching programmes and a supportive community at St Patrick's.

- Practice focused programmes
- A supportive learning community
- World class facilities
- Global reputation
- Deep spiritual and human formation
- Expert mentoring and supervision

A community of learning that draws on a long and distinguished tradition of scholarship and pastoral practice

John Paul II
Library



Our staff are friendly and approachable and give personal care and attention to each student

What we offer

St Patrick's Pontifical University offers a range of internationally recognised part-time, full-time and blended learning programmes taught by leading theologians and philosophers from our beautiful, historic campus in Ireland's only university town.

Diploma and Higher Diploma and Master's programmes offering specialised education and formation in the fields of Theological Studies, Pastoral Ministry, Healthcare Chaplaincy, Youth Ministry, Liturgy, and Liturgical Music.

Who are these programmes for?

Programmes within our Centre for Mission and Ministries appeal to a wide range of adults, from different ethnic, religious, vocational, and academic backgrounds. Teachers seeking to specialise in Theology; Priests and Religious pursuing ongoing formation and professional development; persons in caring professions - like Nursing, Social Work, and Youth Work – discerning a transition to faith-based ministry and chaplaincy; singers and musicians who wish to deepen their musical competency for the liturgical environment; those engaged in community- and youth-based ministries or administration who wish to upskill and gain a qualification to strengthen their professional practice.

These programmes aim to support and develop a wide diversity of callings and giftedness. Our graduates gain proficiency in attending to the complexity of human experience, the challenges within our contemporary world, and the art of effective communication. They continue to make a valuable contribution to the communities and organisations within which they work, for instance in hospital, educational, and prison chaplaincy, journalism and broadcasting, and faith-based agencies and communities.

If you are looking to reorient your profession, enrich your faith life, or develop your ministerial competency; if you are searching for a meaningful occupation that will enable you to serve others and make a difference in your local community; if you desire to integrate your faith with your life and work; or if you feel ready for the challenge of personal, spiritual, academic, and professional growth, you should consider a programme from our Centre for Mission and Ministries.



Why study with us

Learn and grow alongside experts in Theology and related disciplines, and experienced practitioners both on campus and in the field. Our programmes are carefully structured to provide integrated formation for the flourishing of students as whole persons and the development of their professional practice.

With the accumulation of experience, students will have the opportunity to learn and grow, not only in their own sense of identity, but also in trust and recognition of others – lay, religious, and ordained – in the service of the Christian mission, in their own context, according to the distinctiveness of their own vocation.



▶ **“We take seriously Jesus' challenge to be salt and light, recognising that we can only be so to the extent that our imaginations and actions are shaped by the Gospel. By taking seriously both academic and formational aspects, CMM programmes aim to equip people for effective ministry in church and society.”**

Jessie Rogers,
Dean of Theology

▶ “The suite of Pastoral Programmes offer a unique opportunity for SPPU students to integrate life and ministry experience with a deepening theological understanding. By engaging in Placement Education, Spiritual Formation, and various forms of supervision, students are encouraged to become formed in a habit of mind, heart, and style that integrates their academic learning with their faith and ministerial commitment in the world.”

Dr Aoife McGrath
Pastoral Theology
and Programmes



▶ “The Master's in Liturgical Music programme offers students an opportunity to engage more deeply with the music of the Roman Rite, from its roots in plainchant to its expression in a contemporary vernacular context, whilst developing their own particular skills as singers, organists or composers.”

Dr John O’Keeffe,
Director of
Sacred Music

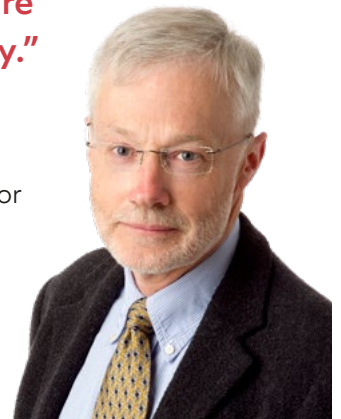


▶ “The Higher Diploma in Theological Studies is a programme for adults who seek a thorough, in-depth introduction to Scripture, Theology, and faith that is rooted in the Catholic Tradition, that engages with the world as it is, while sensitive to the relationship of Christianity to other faiths, and takes seriously the contours of the spiritual in contemporary societies and cultures.

Offered as a blended learning programme, the Higher Diploma in Theological Studies enables those who participate in it to acquire a solid Theological foundation, and offers a recognised theological qualification for those who seek a career as religion teachers or pastoral workers.

Offered in tandem with the Higher Diploma in Theological Studies, the Higher Diploma in Pastoral Liturgy, Ireland’s oldest Liturgy programme, offers anyone interested a fantastic opportunity to deepen their knowledge of the Church’s liturgy and to prepare for liturgical ministry.”

Prof Séamus O’Connell,
Professor of Sacred
Scripture / Course Director
for Higher Diploma in
Theological Studies



Maynooth – The perfect town for study

Situated just 25km west of Dublin, you are right on the doorstep of Ireland's capital city



On-site campus accommodation available with preference given to SPPU Students, perfect for those wishing not to commute or whose programme runs over evenings or weekends.

Our campus is situated just off the M4 Motorway and within walking distance of Maynooth Railway station.

Maynooth is Ireland's only university town. It is home to a vibrant community, rich in heritage and modern conveniences, with excellent transport links across Ireland. With its warm and friendly atmosphere and array of shops, businesses, restaurants and bars, it has something to offer everyone, whether you are looking for culture, nature, or adventure.

The historic town has at either end of the main street, Maynooth Castle and Carton House, two former seats of the Dukes of Leinster. The University campus and town complement each other to the point where one acts as an extension of the other.

How to get here

By road from the West:

Travel along the M4 in the direction of Dublin, exit at Junction 7 for Maynooth and follow the brown University signs for South Campus.

By road from the East/Dublin City Centre:

Travel M4 Westbound, Exit at Junction 7 for Maynooth, following the brown University signs for South Campus.

By road from the North and South: From the M50, Exit at Junction 7 for M4. From M4 exit at Junction 7 for Maynooth, following the brown signs for South Campus.

By road from Dublin Airport:

Exit the Airport onto M1 direction for Dublin City/M50. Exit onto M50 travelling Southbound, from the M50, Exit at Junction 7 for M4. From M4 exit at Junction 7 for Maynooth, following the brown signs for South Campus.

By public transport:

Iarnród Éireann Irish Rail — Maynooth Service from Dublin Connolly — 41 mins



Iarnród Éireann Irish Rail — Sligo/Longford Service — 33mins



Bus Éireann — Route 115 — 41 mins



Dublin Bus — Maynooth served by C Spine routes from the heart of the city



Dublin Airport Hopper — Maynooth — Dublin Airport — 32mins



Images by William Murphy - flickr.com/infomatique / CC BY 2.0

What our Alumni think

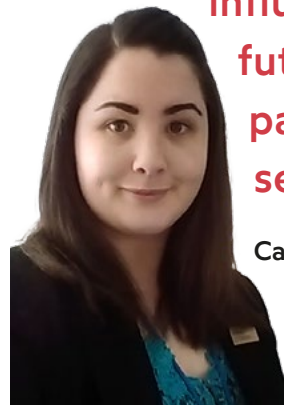
▶ **“My time in St Patrick’s Maynooth gave me a wider lens to see the world, a greater perspective that I bring to my role as Chaplain. Being a Chaplain in this community is very rewarding and allows me bring that part of Maynooth with me.**

What we bring to patients is much bigger than ourselves, it's representative of our faith and Christ, which is critically important for people when they are facing the unknown, a diagnosis or a loss.”



Julianna Crowley, Chaplain
Cork University Hospital &
Cork Maternity Hospital,
BATH & MTh graduate.

▶ **“The skills I developed during the Master's in Pastoral Theology such as teaching, self-reflection and leadership are imperative to my work in hospital ministry today and will be a continued influence in my future years of pastoral service.”**



Caoimhe Doherty
Healthcare Chaplain
MTh Pastoral
Theology

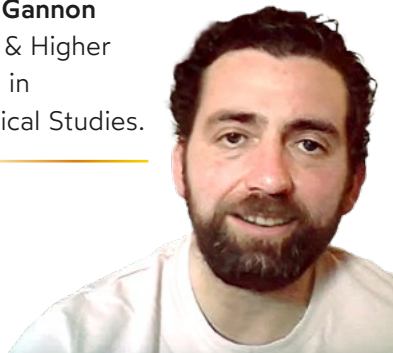


▶ **“The ethos of St Patrick's and its way of teaching, learning and fostering new skills is the most important thing I could have learned.”**

Sinéad Hussey
HDip in Christian Communications,
Broadcaster - RTÉ

▶ **“I was trying to find a course that would renew my qualifications and something that I would enjoy teaching. I was able to add on Religion with the teaching council as one of my subjects.”**

Seamus Gannon
Teacher & Higher Diploma in Theological Studies.



▶ **“Your theology studies have the potential to shape both who you are and what you do, just as it did with me.**

With your own distinctive creativity and imagination, your theology has the potential to influence worlds as diverse as business and finance, education, environmental care, farming and marketing.”

Alan Burke
Head of Mission & Director of Pastoral Care Bon Secours Health System, Baccalaureate in Divinity & Graduate Studies in Moral Theology








Centre for Mission & Ministries

The St Patrick's Pontifical University Centre for Mission and Ministries, located within the Faculty of Theology, exists to advance the participation of the Irish Church in the *Missio Dei* for the 21st Century.




The ethos of the Centre for Mission and Ministries is transformative, praxis-orientated, co-responsible, contextual, responsive and inclusive, founded on fundamental respect for the whole of creation.

It fosters the life and mission of the church by attending to its pastoral practice, liturgical celebration, and reflective heart.

The work of the Centre has a three-fold focus

- practical theology
- integrated formation, and
- interdisciplinary research.

Its activities are rooted in ongoing scholarship and a creative responsiveness to the 'signs of the times' in an evolving landscape. It seeks to be a valuable resource to parishes, pastoral areas, dioceses, religious communities and institutes, and faith-based agencies and organisations.



Rooted in the Catholic tradition and open to the work of the Spirit of God in the world, the Centre recognises and seeks to support and develop a wide diversity of callings and giftedness among the people of God. It is committed in the first instance to go out to the margins and engage comprehensively with contemporary culture.

It seeks to model communities of learning, research and liturgy and to empower partner organisations. The Centre is committed to peacebuilding, right relationships and dialogue with the other in the church and beyond.

The programmes delivered and associated with the centre foster these attitudes and values and are characterised by attention to service, theological reflection, human lived experience and the complex realities of the contemporary church in the world.



Our Programmes

By undertaking one of the Pastoral Programmes, candidates make a big commitment to their own personal and professional development for the sake of participating in the Christian mission. They are challenged to an ever-increasing self-understanding while also learning to listen deeply to others and interpret real situations in a self-conscious, critical, and disciplined manner.

The programmes are structured in a holistic way to nurture the personal, spiritual, pastoral, and intellectual growth of each person, within the context of a vibrant, multi-cultural, collegial community. Men and women – lay, religious, and ordained – practicing ministry in community, school, and healthcare settings, enrich one another’s learning experience.

For many, undertaking education for ministry is a significant moment on the journey of vocational discernment, and growth in ministerial identity. Within the Pastoral Programmes, such discernment becomes not only personal, but communal and truly ecclesial as well.

Together with our Partners in Placement Education, we support the development of leaders for Catholic communities and faith-based activity within organisations and institutions. We inspire our students with Christian values and provide a supportive environment in which people can strengthen their faith, discern their ecclesial identity, and be receptive to God’s call to discipleship and ministry.

If you choose one of the Pastoral Programmes, be prepared for a year (or more) of transformation, that will renew your heart and mind. You will bring your whole self to your programme of study; your own life experience will be a valuable textbook that you will bring into dialogue with other sources of theological insight. The learning and growth you will experience, along with the relationships you will make, will continue to shape you as a person and as a minister into the future. You will enrich each person you meet, as they will enrich you.



Dr Aoife McGrath, Pastoral Theology & Programmes

Higher Diploma in Theological Studies (Blended Learning)

Programme suitable for:

The Higher Diploma in Theological Studies meets all the Teaching Council of Ireland's Requirements for the teaching of Religious Studies at post-primary level. It entitles teachers holding Department-recognised degrees and teacher training qualifications to apply to the teaching council to teach up to 15 hours Religious Education per week in a secondary school.

Other graduates may use the programme as a gateway to applying to a Master's programme in Theology or Pastoral Ministry either here in Maynooth or elsewhere. Others may be interested in the programme simply as a structured way to approach the big questions in life, giving their personal inquiry a theological shape in the Catholic tradition. Additionally, the Higher Diploma equips graduates to take a more active role in their local church community.

Description:

This one-year, evening/weekend, Level 8, 60 ECTS credits programme gives a foundation in Theological Studies to students who hold a primary degree in another discipline.

Admission requirements:

A primary degree or its equivalent is required. While the degree/qualification will normally be in a discipline other than Theology, consideration will be given to all applications.

Course Content:

Modules

- Introduction to Theology
- Reason, Faith and Revelation
- Understanding Jesus Christ Today
- The Church and its Sacraments
- Moral Theology
- Bioethics
- Catholic Social Teaching
- Sacred Scripture
- The Bible and its Worlds
- The Old Testament
- The New Testament
- Liturgy
- Foundations of Worship
- Teaching of Religious Education through the Catholic Ethos
- Introduction to World Religions
- Church History
- Philosophy of Religion Grace, Salvation and Christian Anthropology



Qualification:

HDip



Duration:

Full-time course delivered part-time over 1 year.



Methods of Learning:

Blended - online and on-campus learning



Commencement date:

September of each year, check sppu.ie



Application closing date:

Check sppu.ie/courses for application closing dates



Fees:

See sppu.ie/fees-and-funding



Programme Co-ordinator:

Prof Séamus O'Connell
seamus.oconnell@spcm.ie



Qualification:
Diploma



Duration:
2 years part-time
(Classes scheduled on Friday evenings / Saturday mornings – 12 sessions per year)



Methods of Learning:
In-person



Commencement date:
September of each year, check sppu.ie



Application closing date:
Check sppu.ie/courses for application closing dates



Fees:
See sppu.ie/fees-and-funding



Programme Co-ordinator:
Dr John O’Keeffe
john.okeeffe@spcm.ie

Diploma in Church Music

Programme suitable for:

Those already involved in the ministry of church music in the Christian tradition, whether as organists, singers or choir directors.

Description:

The Diploma in Church Music provides students with a unique opportunity to develop relevant musical skills and deepen their liturgical knowledge. This two-year, weekend-based, Level 7, 30 ECTS credits programme gives participants a foundation in church music in the Christian tradition.

Admission requirements:

Applications are submitted through PAC.

Course Content:

Year 1

Cantor Skills 1

- Choral Conducting 1
- Introduction to Liturgy
- Liturgical Composition 1
- Organ Studies 1
- The Liturgical Assembly & Ministry

Year 2

Cantor Skills 2

- Choral Conducting 2
- Liturgical Composition
- Liturgy & Time
- Organ Studies 2
- The Eucharist



Master's in Liturgical Music

Programme suitable for:

The programme qualifies holders to undertake the post of Organist, Cantor, or Director of Liturgical Music at parish, diocesan or national level.

Description:

The MLM is a joint academic and practice-based programme which combines theological and theoretical study of the Church's liturgy with advanced-level tuition in voice, organ and liturgical composition.

Admission requirements:

The course is especially suited to applicants who have studied Theology and Music to honours degree level. Candidates should normally have obtained at least a Second Class Honours, Grade I overall. The Faculty of Theology may also accept candidates whom it deems to have an equivalent standard. An interview will be part of the selection process. As this Master's programme contains a significant practical component, prospective candidates will need, on application, to furnish evidence of proficiency in at least one of the following three areas: (a) Cantor, (b) Organ, (c) Liturgical Composition. Candidates whose first language is not English will be required to satisfy the English language requirements.

Course Content:

Year 1

Core Academic Modules

- Liturgy: Ritual, Theological and Historical Approaches
- Sacramental Theology: Liturgical and Systematic Aspects
- Introduction to Liturgy and the Sacraments of Christian Initiation
- The Eucharist / Liturgical Time
- Music in Christian Worship
- Aspects of Liturgical Music

Recognition of Prior Learning may be considered for certain candidates in respect of the following modules:

- Introduction to Liturgy
- the Eucharist / Liturgical Time

In the following Practical Modules, students take Liturgical Composition and choose between Organ Skills and Cantor Skills.

Practical Modules

- Liturgical Composition
- Organ Skills I
- Cantor Skills I

Year 2

Practical Modules

- Methodology in Research
- Guided Thesis Research
- Major Practicum in a Musical Discipline



Qualification:

MLM



Duration:

2 years Full-Time



Methods of Learning:

In-person



Commencement date:

September of each year, check sppu.ie



Application closing date:

Check sppu.ie/courses for application closing dates



Fees:

See sppu.ie/fees-and-funding



Programme Co-ordinator:

Dr John O'Keeffe

john.okeeffe@spcm.ie

Rev Dr Neil Xavier O'Donoghue

neilxavier.odonoghue@spcm.ie





Qualification:
Diploma



Duration:
1 year Full-Time,
2 years Part-Time



Methods of Learning:
In-person



Commencement date:
September of each year,
check sppu.ie



Application closing date:
Check sppu.ie/courses for
application closing dates



Fees:
See sppu.ie/fees-and-funding



Programme Co-ordinator:
Eileen O'Connell OP
eileen.oconnell@spcm.ie

Diploma in Youth Ministry and Spirituality

Programme suitable for:

This programme in Youth Ministry and Spirituality is designed to be a pathway for someone with sufficient working experience in youth ministry but who does not have a previous degree in theology or youth ministry. Such a candidate may desire to develop their conceptual, theoretical, and practical skills, and to receive a professional qualification in youth ministry.

Description:

The programme is also designed for students or graduates of primary degrees in theology who intend to engage in further studies (e.g. Master's in Youth Ministry) but need a preparatory Diploma to have the right methodological and pastoral qualification to engage in research in youth ministry at a post graduate level.

This course will help to respond to the urgent needs of pastoral mission and care for young people in Ireland, especially in Catholic parishes throughout the country. It will be an introductory programme for those who wish to develop their pastoral knowledge and skills for ministry with children, teenagers and young adults, while gaining a professional qualification. The programme is designed to provide practical experience, theological learning, and spiritual development. Students are given an opportunity to minister in pastoral contexts both in Ireland and internationally.

Learning will happen through course work, participation in seminars, human development, exploration of the student's own personal faith journey, and placement education. Students form an ability to integrate their learning from academic study and placement experiences accompanying young people in different pastoral situations, in diverse settings, including school, parish, and youth centres (clubs and projects).

The study of the fundamental pedagogical concepts and theories will be enhanced by the practical approach so that students are able to immediately put their learning outcomes into practice. It is expected that the course will be a life-changing experience. It will nourish participants' engagement in learning whilst promoting learner autonomy and life-long learning.

Admission requirements:

Entry requirements for the Diploma in Youth Ministry and Spirituality have been set in order to select potential students who have the proven academic ability to undertake a Level 7 Diploma course.

The admissions policy aims to attract and recruit motivated applicants across the full range of possible access routes. Students may have a background in any academic discipline. The overriding principle upon which admission decisions are based is that applicants should be likely to benefit from and succeed on the course.



Pastoral Liturgy Diploma /Higher Diploma (Blended Learning)

The Diploma in Pastoral Liturgy attests to the completion of a substantial and coherent programme of learning, allowing students to finish an accredited introductory programme in pastoral liturgy and to obtain a credential for it. This one-year, evening/weekend, Level 7, 60 ECTS credits programme gives a foundation in Pastoral Liturgy. Admission to the course is normally confined to those who have a basic academic qualification at second level. Particular consideration will be given to applicants who have relevant pastoral experience in their local parish or diocese. Others may be interested in the programme simply as a way to better understand the liturgical life of the Church, which is the highest expression of theology in the Catholic tradition.

The Higher Diploma is a one-year, evening/weekend, Level 8, 60 ECTS credits programme that gives a foundation in Pastoral Liturgy to students who hold a primary degree in another discipline. Other students may use the programme as a gateway to applying to a Master's programme in Liturgical Theology or Pastoral Ministry either here in Maynooth or elsewhere (students interested in entering a Master's programme are advised to speak with our Postgraduate Admissions Office pgadmissions@spcm.ie prior to starting the HDip for further details). Others may be interested in the programme simply as a way to better understand the liturgical life of the Church, which is the highest expression of theology in the Catholic tradition. Additionally, the Higher Diploma equips graduates to take a more active role in their local church community.

The Higher Diploma and the Diploma are taken together in a common structure with common classes. However, both programmes are evaluated at the appropriate level. All evaluations will take account of the student's level and there will be different goals and expectations for students in the Dip and HDip programmes.

Admission Requirements:

A primary degree or its equivalent is required for the HDip.

For admission to the Diploma programme a pass grade is required in five subjects of the Leaving Certificate or its equivalent: three of these must be academic subjects in the Maynooth University matriculation syllabus. Consideration will be given to all applications. Applicants with experience in ministry at the parish or diocesan level will be given particular consideration.

Method of Learning:

- Online teaching on Wednesdays - 6.30 p.m. – 9.30 p.m. Students can participate from wherever is convenient to them
- 3 hours of self-directed learning each week when classes are in session, at times that suit students
- Weekly time for study and working on assignments
- 6 weekend residentials (Friday/Saturday), three each semester, with face-to-face classes.



Qualification:

Diploma
HDip



Duration:

1 year - Evening/Weekend



Methods of Learning:

Blended - online and on-campus learning



Commencement date:

September of each year, check sppu.ie



Application closing date:

Check sppu.ie/courses for application closing dates



Fees:

See sppu.ie/fees-and-funding



Programme Co-ordinator:

Rev Dr Neil Xavier O'Donoghue
neilxavier.odonoghue@spcm.ie



► "I came to Maynooth to learn more about liturgy and it opened up a whole new world for me. I have completed a Master's in Theology and my daughters think that I will never leave!"

Mary Clavin, Volunteer Parish Worker - Higher Diploma in Pastoral Liturgy & MTh

**Qualification:**

HDip

**Duration:**

1 year Full-Time

**Methods of Learning:**

In-person

**Commencement date:**September of each year,
check sppu.ie**Application closing date:**Check sppu.ie/courses for
application closing dates**Fees:**See sppu.ie/fees-and-funding**Programme Co-ordinator:**

Finbarr Tracey

finbarr@kairoscomms.ie

Higher Diploma in Christian Communication and Media Practice

Programme suitable for:

Those students interested in acquiring a comprehensive range of media skills, with specific regard to religious and social affairs.

Description:

Students are trained by media professionals in the management and technical aspects of media production.

The Postgraduate Diploma in Christian Communication and Media Practice is delivered through Kairos Communications Ltd. Founded almost 40 years ago, Kairos moved into television broadcasting and has created hundreds of hours of religious, social and corporate productions for a diverse range of clients and companies.

Kairos Communications operates its training, teaching and production work from a suite of offices and purpose-built facilities opposite St Patrick's Pontifical University campus. You will have access to a large array of practical resources, both in terms of camera equipment, sound devices, computer hardware and software. All equipment is sourced and serviced by our onsite technical personnel.

The company has a large television studio with a production gantry, lighting and engineering room and audio control room and also has a full broadcast spec multi camera Outside Broadcast Unit, a radio studio complex, a large seminar room, classrooms and two fully equipped computer labs.

The Postgraduate Diploma in Christian Communication and Media Practice is awarded on the successful completion of one year's full-time study.

Admission requirements:

Grade 2:2 in a primary degree or equivalent qualification, or a suitable professional qualification with experience in the field of media or theology. Applications are also welcome from candidates who do not fulfil the above requirements but who have a demonstrable interest in media, theology, or social justice, following an interview.

Course Content:

The assessment is continuous and is designed to facilitate learning in both knowledge and skills areas and to provide independent validation of standards achieved appropriate to the course objectives and in line with national and international norms.

The course includes a taught element, with lectures and major essays which will be due for submission at the end of the first and second semesters, and the completion of several production projects throughout the year.

The taught element of the course will account for a total of 60 credits, with the academic modules providing 15 credits and the production projects accounting for 45 credits.

Students will take a total of 60 credits, 30 credits in both semesters one and two. All modules are compulsory. All taught modules will be evaluated through continuous assessment and/or by production or essay assignments at the end of each semester.

Credit Weighting:

7.5 Credits per Major module, 5 Credits per Mid module and 2.5 Credits per Mini Module.

Diploma in Pastoral Theology

Programme suitable for:

Persons who have some experience in parish-based ministry or administration, catechesis or sacramental preparation, or similar, but who do not have a formal qualification. It also suits those looking for an introduction to faith-based ministry in community, school, and hospital settings. These candidates study at diploma level because they do not have a primary degree.

Description:

This is a level 7, introductory programme for someone preparing for ministry leadership in the Church.

It forms part of a person's initial formation, preparing him/her for exercising the responsibilities of ministry, especially leadership in public prayer, pastoral care and spiritual accompaniment, and building and strengthening community. This includes acquiring specialised skills to teach in diverse settings, provide effective catechetical and faith formation, and exercise responsible stewardship of parish personnel and resources.

This level allows students to develop a specialised knowledge of theological principles as these relate to ministry practice. Students form an ability to integrate their learning from academic study and placement experiences in parish, school, and hospital settings, in order to establish a sense of ministerial identity and exercise appropriate judgement in ministry leadership.

This diploma follows the same academic and placement schedules as the Higher Diploma in Pastoral Theology, and is awarded on the successful completion of one year's full-time engagement.

Admission requirements:

- Candidates who have experience in parish-based or other pastoral ministry but do not hold a primary degree may be considered for entry.
- They may be required to take courses in theology to qualify for admission.
- Candidates whose first language is not English will be required to satisfy the English language requirement.
- Successful individual and group interviews are an essential part of the selection process.

Clinical Pastoral Education

At St Patrick's Pontifical University, our goal is to provide pastoral formation for our students, to cultivate the knowledge, attitudes, and skills they will need to minister effectively in the diverse pastoral settings.

Our strategy is to have vital 'Teaching Pastoral Contexts' that will work in partnership with the Pastoral Programmes at SPPU, and complement the learning that takes place in the classroom setting in Maynooth. The Teaching Pastoral Contexts will provide students with good quality placement experiences within beneficial and instructive learning environments. Students will undertake a second placement through one unit of Clinical Pastoral Education (CPE) or its equivalent (12 weeks).

Placement Education:

Students undertake between 240-282 hours of ministry practice in Teaching Placement sites (i.e., in approved community and school settings), alongside experienced mentors, for the duration of the academic year. They undertake a second, 10-12 week placement in a clinical setting by completing a unit of Clinical Pastoral Education (CPE) in an accredited CPE hospital.



Qualification:

Diploma



Duration:

1 year Full-Time



Methods of Learning:

- In-person on campus
- Placement Education onsite in a Teaching Parish or equivalent setting



Commencement date:

September of each year, check sppu.ie



Application closing date:

Check sppu.ie/courses for application closing dates



Fees:

See sppu.ie/fees-and-funding



Programme Co-ordinator:

Maureen Kelly

maureen.kelly@spcm.ie



**Qualification:**

HDip

**Duration:**

1 year Full-Time

**Methods of Learning:**

- In-person on campus
- Placement Education onsite in a Teaching Parish or equivalent setting

**Commencement date:**September of each year, check sppu.ie**Application closing date:**Check sppu.ie/courses for application closing dates**Fees:**See sppu.ie/fees-and-funding**Programme Co-ordinator:**Maureen Kelly
maureen.kelly@spcm.ie

Higher Diploma in Pastoral Theology

Programme suitable for:

Persons who have a prior degree and have at least 65 ECTS of Theology and seek to specialise in some form of pastoral ministry. Candidates may have experience in parish-based ministry or administration, catechesis or sacramental preparation, or similar, but do not have a formal qualification. It also suits those looking for an introduction to faith-based ministry in community, school, and hospital settings.

Description:

This level 8 programme forms part of a person's initial formation for ministry leadership in the Church, preparing him/her to minister effectively in a peer relationship with other pastoral ministers.

Students are taught to use advanced skills in professional ministry, especially leadership in public prayer, pastoral care and spiritual accompaniment, and building and strengthening community. This includes using and transforming advanced skills and tools to teach in diverse settings, provide effective catechetical and faith formation, and exercise responsible stewardship of parish personnel and resources.

Admission requirements:

Candidates are required to have a recognised degree qualification where theology is at least a major component. Candidates with other degrees may be admitted if they have experience in pastoral ministry. However, these will be required to take courses in theology to qualify for admission. Students whose first language is not English will be required to satisfy the English language requirement. Successful individual and group interviews are an essential part of the selection process.

Clinical Pastoral Education

Students will undertake a second placement through one unit of Clinical Pastoral Education (CPE) or its equivalent (12 weeks). CPE is a professional education for ministry conducted in the hospital setting. The course includes development of self-understanding and the foundation for the practice of pastoral care. CPE is a supervised course, which students apply for independently and take after completion of the core modules and parish placement. CPE is a qualifying course for the completion of the Higher Diploma programme, and the CPE placement site is arranged in collaboration with the Pastoral Theology Director.

Placement Education:

At St Patrick's Pontifical University, our goal is to provide pastoral formation for our students, to cultivate the knowledge, attitudes, and skills they will need to minister effectively in the diverse pastoral settings.

Our strategy is to have vital 'Teaching Pastoral Contexts' that will work in partnership with the Pastoral Programmes at SPPU, and complement the learning that takes place in the classroom setting in Maynooth. The Teaching Pastoral Contexts will provide students with good quality placement experiences within beneficial and instructive learning environments.

Students undertake between 414-429 hours of ministry practice in Teaching Placement sites (i.e., in approved community and school settings), alongside experienced mentors, for the duration of the academic year. They undertake a second, 10-12 week placement in a clinical setting by completing a unit of Clinical Pastoral Education (CPE) in an accredited CPE hospital.



Master's in Theology (Pastoral Theology)

Programme suitable for:

Graduates of Theology degrees seeking to specialise in some form of pastoral ministry and undertake research within the field of Pastoral/ Practical Theology. Candidates may have a significant amount of ministry experience in a given area but have not had any formal preparation for pastoral leadership. Ministers seeking professional growth and development to strengthen their leadership capacity in a changing ministerial landscape.

Description:

This level 9 programme ideally forms part of a minister's continuing journey of growth and development, strengthening his/her capacity for ministry leadership in the Church.

At this level, ministers are enabled to take significant responsibility for the work of individuals and groups, and for leading and initiating mission-focused activity in a wide (and sometimes unpredictable) variety of professional levels and contexts. Students develop new skills to a high level, including novel and emerging approaches in professional ministry, especially within the areas of leadership in public prayer, pastoral care and spiritual accompaniment, and building and strengthening community. Students learn complex and advanced skills to teach in diverse settings, provide effective catechetical and faith formation, and exercise responsible stewardship of parish personnel and resources.

Admission requirements:

The minimum entry requirement for the programme is an honours primary degree in which Theology comprises at least an equal joint honours component. Applicants should normally have obtained at least a Second Class Honours, Grade I overall, and Second Class Honours, Grade I in Theology. Applicants should also have significant experience in ministry practice. Individual and group interviews form an essential part of the selection process.

The Faculty of Theology may also accept applicants whom it deems to have achieved an equivalent standard. They may be required to take additional courses in Theology to qualify for admission.

Placement Education:

At St Patrick's Pontifical University, our goal is to provide pastoral formation for our students, to cultivate the knowledge, attitudes, and skills they will need to minister effectively in the diverse pastoral settings.

Our strategy is to have vital 'Teaching Pastoral Contexts' that will work in partnership with the Pastoral Programmes at SPPU, and complement the learning that takes place in the classroom setting in Maynooth. The Teaching Pastoral Contexts will provide students with good quality placement experiences within beneficial and instructive learning environments.

Students undertake between 414-429 hours of ministry practice in Teaching Placement sites (i.e., in approved community and school settings), alongside experienced mentors, for the duration of the academic year. They undertake a second, 10-12 week placement in a clinical setting by completing a unit of Clinical Pastoral Education (CPE) in an accredited CPE hospital.



Qualification:

MTh



Duration:

2 years Full-Time
or 3 years Part-Time



Methods of Learning:

- In-person on campus
- Placement Education onsite in a Teaching Parish or equivalent setting
- Supervised Research



Commencement date:

September of each year,
check sppu.ie



Application closing date:

Check sppu.ie/courses for
application closing dates



Fees:

See sppu.ie/fees-and-funding



Programme Co-ordinator:

Dr Michael Shortall

michael.shortall@spcm.ie

**Qualification:**

HDip

**Duration:**

1 year Full-Time

**Methods of Learning:**

- In-person on campus
- Clinical Placement/ Internship onsite in an approved Teaching Hospital

**Commencement date:**September of each year, check sppu.ie**Application closing date:**Check sppu.ie/courses for application closing dates**Fees:**See sppu.ie/fees-and-funding**Programme Co-ordinator:**Maureen Kelly
maureen.kelly@spcm.ie

Higher Diploma in Pastoral Theology (Healthcare Chaplaincy)

Programme suitable for:

Persons who have ministry experience or who have experience of working in caring professions (especially in a healthcare setting) who wish to transition to healthcare chaplaincy. Persons who feel drawn to accompany those who suffer because of illness, trauma, tragedy, grief, or bereavement and gain a recognised qualification. Candidates will have a prior degree and at least 65 ECTS of Theology.

Description:

This programme forms part of a person's initial formation for chaplaincy leadership in a healthcare setting, preparing him/her to minister effectively in collaboration with multi-disciplinary healthcare colleagues in the provision of holistic healthcare in public, voluntary, and private healthcare facilities. It prepares students to use advanced skills in professional caring ministry, especially leadership in prayer, pastoral care, and accompaniment with persons who suffer because of illness, trauma, tragedy, grief and bereavement.

This level allows students to develop a detailed knowledge of theological principles as these relate to ministry practice, and an understanding of concepts, methods, and models pertaining to ways of doing theology in practice.

It enables students to develop the ability to act in variable contexts, to be flexible in response to the needs of persons who are terminally ill or actively dying, to their family members and loved ones, and to professional colleagues who are deeply impacted by health-related conditions and experiences.

Students encounter a diversity of situations and people, go beyond their comfort zone, and learn to minister compassionately and sensitively, providing comforting outreach, sacramental care, facilitating the celebration of liturgy, public worship, and spiritual practices as appropriate within a challenging healthcare landscape.

Admission requirements:

Candidates are required to have a recognised degree qualification where theology is at least a major component. Candidates with other degrees may be admitted if they have experience in pastoral ministry. However, these will be required to take courses in theology to qualify for admission. Students whose first language is not English will be required to satisfy the English language requirement. Successful individual and group interviews are an essential part of the selection process. Candidates who are interested in part-time engagement must indicate this preference at application stage.

**Placement Education:**

At St Patrick's Pontifical University, our goal is to provide pastoral formation for our students, to cultivate the knowledge, attitudes, and skills they will need to minister effectively in the diverse pastoral settings.

Our strategy is to have vital 'Teaching Pastoral Contexts' that will work in partnership with the Pastoral Programmes at SPPU, and complement the learning that takes place in the classroom setting in Maynooth. The Teaching Pastoral Contexts will provide students with good quality placement experiences within beneficial and instructive learning environments.

Students undertake between 414-429 hours of ministry practice in an approved Teaching Hospital, alongside experienced mentors, for the duration of the academic year. They undertake an additional 350 hours of clinical placement over a 10 week period in the Summer (May -July).

Master's in Theology (Pastoral Theology, Healthcare Chaplaincy)

Programme suitable for:

Graduates of Theology degrees seeking to specialise in Healthcare Chaplaincy and undertake research within the field of Pastoral/ Practical Theology. Healthcare Chaplains may undertake this programme as part of their ongoing professional development.

Description:

This level 9 programme forms part of a minister's continuing journey of growth and development, strengthening capacity for chaplaincy leadership in healthcare systems, and in various healthcare facilities. This includes taking responsibility for professional relationship building with multi-disciplinary healthcare colleagues, strengthening the provision of pastoral care in healthcare institutions, and for advancing professional, holistic, compassionate quality care for patients, families, and staff.

Each candidate completes a Master's dissertation that presents a rigorous, in-depth, evidence-based, critical examination of a particular pastoral area of healthcare chaplaincy practice. The candidate thus acquires a mastery in techniques of reflection and enquiry, and methods of research, while contributing to the body of chaplaincy research and to transforming ministerial practice. It will enable candidates to exercise the highest quality pastoral care in clinical practice and be effective leaders in the future development of the profession.

Admission requirements:

The minimum entry requirement for the programme is an honours primary degree in which Theology comprises at least an equal joint honours component. Applicants should normally have obtained at least a Second Class Honours, Grade I overall, and Second Class Honours, Grade I in Theology. Applicants should also have significant experience in ministry practice. Individual and group interviews form an essential part of the selection process.

The Faculty of Theology may also accept applicants whom it deems to have achieved an equivalent standard.


Placement Education:


At St Patrick's Pontifical University, our goal is to provide pastoral formation for our students, to cultivate the knowledge, attitudes, and skills they will need to minister effectively in the diverse pastoral settings.

Our strategy is to have vital 'Teaching Pastoral Contexts' that will work in partnership with the Pastoral Programmes at SPPU, and complement the learning that takes place in the classroom setting in Maynooth. The Teaching Pastoral Contexts will provide students with good quality placement experiences within beneficial and instructive learning environments.


In Year One, students undertake between 414-429 hours of ministry practice in an approved Teaching Hospital, alongside experienced mentors, for the duration of the academic year. They undertake an additional 350 hours of clinical placement over a 10 week period in the Summer (May -July). In Year Two, 100 hours of independent practice in an approved clinical setting (average 10 hours p.w. for 12 weeks, during the third semester).


 **Qualification:**
MTh

 **Duration:**
2 years Full-Time
(or equivalent Part-Time)


 **Methods of Learning:**

- In-person on campus
- Clinical Placement/ Internship onsite in an approved Teaching Hospital

 **Commencement date:**
September of each year, check sppu.ie

 **Application closing date:**
Check sppu.ie/courses for application closing dates

 **Fees:**
See sppu.ie/fees-and-funding

 **Programme Co-ordinator:**
Dr Michael Shortall
michael.shortall@spcm.ie



**Qualification:**

Prof Cert
Prof PG Cert

**Methods of Learning:**

In-person

**Commencement date:**

September of each year,
check sppu.ie

**Application closing date:**

Check sppu.ie/courses for
application closing dates

**Fees:**

See sppu.ie/fees-and-funding

**Programme Co-ordinator:**

Rev. Dr John-Paul Sheridan
johnpaul.sheridan@spcm.ie

Professional Certificate/ Post Graduate Certificate in Catholic Religious Education and Theological Studies

Programmes suitable for:

The Professional Certificate is aimed at Students wishing to progress to primary school teaching who are undertaking a Bachelors in Education degree programme, the certificate is run alongside the Bachelor's degree.

The Professional Post Graduate Certificate is aimed at those who are undertaking a Professional Master's in Education degree, the Post Graduate Certificate is run alongside the Master's.

Description:

The Professional Certificate and Post Graduate Certificate in Catholic Religious Education and Theological Studies are offered alongside the Bachelor of Education and Professional Master's in Education (Primary Teaching) awarded by Maynooth University (MU). It is designed to educate teachers in foundational knowledge and equip them with the pedagogical skills necessary for communicating the Catholic faith in primary schools.

Offered in collaboration with the Froebel Department of Primary and Early Childhood Education (Maynooth University), it aims to form teachers capable of responding to the many spiritual and religious opportunities and challenges facing pupils. The Educational Writings of Friedrich Froebel (1782-1852) outline his philosophy on early childhood education, importance of play and activity, and child-centred methodologies. His writings have much in common with the philosophy at the heart of Catholic Education. From the point of view of equipping future teachers for Catholic schools, the following points are of particular relevance.

- The concept of the "unison" between nature and the human person is sprung from one and the same Creator. This is called "inner-connection";
- The recognition of truth begins in the real, visible world in the phenomena of nature, in which the laws of God are to be found, learned, and known as unchangeable.
- In all things, there lives and reigns an eternal law. This law is based on an eternal unity. This unity is God. All things have come from God, and have their origin in the Divine Unity, in God alone.



Diploma in Diaconate Studies

Programme suitable for:

Those interested in becoming a Permanent Deacon.

The Diploma in Diaconal Studies is a 90 ECT (level 7) part-time hybrid programme over three years. The aims and learning outcomes of the programme are those already agreed with the National Training Authority for the Permanent Diaconate of the Irish Episcopal Conference.

Programme Aims and Learning Outcomes

The aims of this programme are:

- To equip future permanent deacons with broad knowledge of the theological content of their faith
- To foster the development of a reflective approach to ministry thereby ensuring a fruitful meeting between faith and contemporary culture
- To deepen awareness and appreciation of the wide variety of the forms of ecclesial ministry, lay and ordained
- To enable candidates to acquire skills and resources that will sustain them throughout their ministry.

By the end of this programme successful candidates will be able to:

- exhibit a foundational knowledge of the doctrines of faith and theology
- demonstrate an ability to read and interpret biblical and ecclesiastical texts
- utilise the skill of theological reflection
- apply research methods appropriate to theology and pastoral ministry
- draw on bibliographical resources, research methods and secondary material responsibly.

Admission Requirements:

Admission on the programme is by way of acceptance by a Roman Catholic Bishop on to a formation programme for the Permanent Diaconate.

In the first instance, if you are considering the possibility of offering yourself for service as a deacon, you should make contact with your local Diocesan Director for the Permanent Diaconate. An arrangement will be made to meet with you to explore any questions you may have, and to decide whether it would be appropriate for you to participate in a propaedeutic (preparatory) period, which ordinarily takes one year.

Anyone wishing to participate in the propaedeutic programme which begins in the Autumn, should make his initial enquiry no later than the end of June of that year. Acceptance into the propaedeutic programme is not, however, a guarantee of acceptance into formation, or of eventual ordination to the permanent diaconate.



Qualification:

DDS



Duration:

3 years



Methods of Learning:

In-person



Commencement date:

September of each year, check sppu.ie



Application closing date:

Check sppu.ie/courses for application closing dates



Fees:

See sppu.ie/fees-and-funding



Programme Co-ordinator:

Rev Brian Kavanagh

For further details,

See the website:

sppu.ie/courses/diploma-in-diaconate-studies

CMM Admissions Office
St Patrick's Pontifical University,
Maynooth, County Kildare

Email: cmmadmissions@spcm.ie



Collaborative Partners' Programmes

The following programmes are provided through partners.

For further information, please apply to the appropriate programme provider at the address indicated.



Programme Co-ordinator:

Dr Jessie Rogers, MA, D.Phil

Certificate in Person Centred Counselling (Marriage & Relationships)

ACCORD Central Office,
Columba Centre, Maynooth, Co Kildare

Tel: [+353 \(0\)1 505 3112](tel:+353(0)15053112)

Website: accord.ie

Certificate in Marriage Education

ACCORD Central Office,
Columba Centre, Maynooth, Co Kildare

Tel: [+353 \(0\)1 505 3112](tel:+353(0)15053112)

Website: accord.ie

Certificate in Christian Studies

Diocese of Cork, Cloyne and Ross (Col)

Rev Terry Mitchell,
Diocesan Further Education & Training Officer

Email: co.diocese.education@gmail.com
furthereducation@corkchurchofireland.com

Tel: [+353 \(0\)87 2767562](tel:+353(0)872767562)

Advanced Diploma in Spirituality (Supervision)

Diploma in Spirituality (Spiritual Direction)

Manresa Jesuit Centre of Spirituality,
426 Clontarf Road, Dollymount, Dublin 3.

Tel: [+353 \(0\)1 833 1352](tel:+353(0)18331352)

Website: manresa.ie

2yr Diploma in Spirituality (Applied Youth Ministry)

1 yr Certificate in Spirituality (Applied Youth Ministry)

Shekinah, Sr Jennifer Perkins (Course Contact)

Tel: [+353 \(0\)86 842 8260](tel:+353(0)868428260)

Email: info@shekinah.ie

Website: shekinah.ie

Certificate / Diploma / Degree in Theology

(Adult Education & Pastoral Ministry)

Armagh Diocesan Pastoral Office,
Holy Family Parochial House, Hoey's Lane,
Dundalk, Co. Louth, A91 K761

Tel: [+353 \(0\)42 935 1316](tel:+353(0)429351316)

Email: milanda@parishandfamily.com

Carmelite Studies (Suite of Awards)

- **Certificate / Diploma in Spirituality** (Carmelite Studies)
- **Certificate / Diploma in Theology** (Carmelite Studies)
- **BTh** (Carmelite Studies)
- **MTh** (Carmelite Studies)

Website: www.cibi.ie



The learning platform for all involved in ministry in parishes and dioceses.

Aspal, the Irish for Apostle reminds us that we are all called in order to be sent. The baptism we share, recalled in the blue waters of the Aspal logo, calls us to mission – to bring others to a knowledge of our Triune God, pointed to in that first A of Aspal. A God from whom all emerge and toward whom all intend.

The seven buildings that make our Aspal Church remind us, then, of our goal the completeness and perfection to which we are, with God's help, intended and for which seven stands as a continual reminder; the seven sacraments moments of encounter with our God.

In learning we grow, in coming together our Church is built, in our being sent others are called.

Aspal is the product of a collaboration of the Adult Faith Development Team in Ossory Diocese and St Patrick's Pontifical University, Maynooth. It is the leader in digital faith formation on the island of Ireland, serving every parish and diocese in Ireland.

Our collaboration allows for people in the comfort of their own homes to engage with the highest quality ongoing faith formation. This new means of digital catechesis – the future of faith learning – has been made possible thanks to the support of the Benefact Trust.

Digital Faith Formation is the future of our helping people to know God in a deeper way. We are delighted in this collaboration to lead people on this journey.

Courses

Current Courses include:

- Introducing Synodality
- Formation for Ministers of the Eucharist
- The Kiss of Christ
- Pathways to Ministry
- Pastoral Council training & planning
- Foundations in Youth Ministry
- Advent course - Emmanuel- God with us

For more information and to register for online courses visit aspal.ie

Aspal, this new means of digital catechesis has been made possible thanks to the support of the Benefact Trust.



Student Support

The University Library

The Library is a key resource for students. A team of dedicated staff provide all students with a high quality service in a friendly and student-centred environment. The library offers space for eight different learning styles, from the collaborative to totally silent spaces. Staff are always on hand to deal with any queries students may have. The eBook collection and almost 50,000 journals can be accessed by registered students via the web from anywhere in the world. Kindle readers are available to borrow and PCs and laptops are available throughout the library. More information about the library can be found at sppu.ie/library.



John Paul II
Library

Student Accommodation

As a student of the Centre for Mission & Ministries, you can avail of accommodation on site in the historic St Patrick's campus on a short-term basis to suit your needs. Students attending evening and weekend classes can opt to stay over should they wish.

For more information visit sppu.ie/accommodation or email: villageaccounts@spcm.ie

Mentoring

Individual student mentoring is available by request. For more information email mcomm@spcm.ie



Scholarships

St Patrick's Pontifical University, Maynooth awards scholarships, grants, and fee remission to current and incoming postgraduate candidates in order to promote and foster excellence in scholarship and research, but also to support Mission & Ministries students in their studies, to enhance their experience of study and research, and to broaden their academic horizons.



Scholarships and grants are awarded initially for one year but may be considered for renewal from year to year during the holder's course of studies subject to renewed application.

The range of scholarships and grants offered by the University may not necessarily be awarded every year. Preference is given to applicants who do not hold any other scholarship or educational award. Prospective incoming candidates who have been accepted into a programme may be invited to apply for scholarships, grants or fee remission as appropriate. Scholarships are awarded to successful candidates specifically in recognition of their academic excellence and potential. Grants may be assigned to successful candidates on a financial needs basis in all other cases.



Fee Remission is awarded in identified circumstances on the instruction of the President in consultation with the Scholarships and Grants Board. The Scholarships and Grants Board reserves the right to determine any Scholarship, Grant or Fee Remission in whatever manner deemed suitable given a candidate's application.

Such awards may include support for accommodation costs, fees, or otherwise. Further information and the Scholarships Listing can be found on our website: sppu.ie/scholarships-funding.



Applying to us

Irish and EU applicants

Applications are now being accepted on pac.ie. If you have any queries please contact pgadmissions@spcm.ie.

- You must have an active e-mail account in order to use this facility. It is your responsibility to check your PAC account regularly for any updates on your application and ensure it is active and in working order.
- Please note there is a €50 non-refundable application fee payable to PAC.

Admission Requirements

- All intending applicants are advised to familiarise themselves with the entry requirements and the start dates for the programme(s) of their choice. Full details for each programme on offer in St Patrick's Pontifical University can be found at sppu.ie/courses.

Student Assistance Fund (SAF)

The Student Assistance/Access Fund is jointly sponsored by the European Social Fund and the Irish Government. It is available for students who require additional financial support to enable them to benefit fully from their third level studies. Registered students do not necessarily need to be grant holders to apply for funding. It simply offers a limited amount of financial support to students who experience financial difficulties related to the costs of their studies. The funding is available to all EU registered students of St Patrick's Pontifical University

Transfer applications

Applications are welcomed from candidates who have completed one or more years of a postgraduate programme and wish to transfer into one of our postgraduate programmes. Transfer applicants must also apply online through PAC.

Fees

The fees for our postgraduate courses vary from course to course. Our Full-Time, Postgraduate Master's in Theology, & Doctorate in Theology are approved courses for the purposes of SUSI Grants.

For further queries please contact fees@spcm.ie or visit sppu.ie/fees-and-funding.

International Students

International / Non-EU applicants from outside the Republic of Ireland

Applicants are to apply by the date specified alongside each course.

International / Non-EU must apply through PAC. There is an “Apply Now” button on the front page of each programme on our website, which will take applicants directly to PAC.

Visa Applications

It is vital that international students begin the visa application process as soon as possible. All postgraduate students are obliged to attend induction/orientation sessions at the start of the first semester. The timetable will be sent to you on acceptance to the programme. *Please be aware that students who arrive late may not be allowed to start the programme.*

Academic and English-Language Requirements for non-EU citizens

International applicants must have a recognised primary (undergraduate) degree which is considered equivalent to an Irish university primary degree. Some programmes may have additional requirements. The minimum English-language requirements for postgraduate study are: IELTS 6.5 overall or equivalent.

Information on Recognised Prior Learning and Recognised Prior Experiential Learning at SPPU

SPPU accepts applications for both recognised prior learning (RPL) and recognised experiential prior learning (RPEL). SPPU is in alignment with the National Strategy for Higher Education to 2030 and Ireland’s National Skills Strategy 2025, where the University has committed to develop and implement a standardised system of accreditation of prior learning taking account of previous education, skills, work experience and engagement in society. QQI's core statutory quality assurance guidelines also require that SPPU policies and procedures for learner admission, progression and recognition include fair recognition of education and training qualifications, periods of study and prior learning, including the recognition of non-formal and informal learning. In this way SPPU’s ethos enables flexible learning pathways.

From an admissions perspective, whilst there are normally defined academic entry requirements for university programmes, it is appropriate that SPPU has mechanisms to allow entry to applicants who do not meet the normal requirements, but who are, for other reasons deserving of admission.

Recognition of prior learning is when formal recognition is given for relevant learning already obtained prior to starting on a programme or module. That learning may have been attained through or in a formal, non-formal and informal experience or context.

There are three defined routes of access through RPL to SPPU;

1. Direct entry to first year: Learners can commence a programme of study at SPPU, based on learning outcomes which identify the knowledge, skill and competence required to enter.
2. Advanced entry to a programme of study in cases where a learner can demonstrate that they already achieved the learning outcomes associated with all modules for the stage or year for which they are seeking an exemption.
3. Granting of exemptions or credits for all types of learning.

Please contact **registry@spcm.ie** for further information

Information on placements for International Learners

International learners enrolled on courses on certain programmes at SPPU (Level 7 or equivalent and above) are allowed to undertake an internship where this forms part of their programme. This is subject to the following rules.

- The internship or work placement component of the course cannot exceed 50% of the duration of the course. In addition the employment cannot be in a self-employed capacity.
- Work placements as part of the academic programme must form an integral part of the course and their completion contribute to the final award.
- SPPU ensures that the placements are appropriate to the nature and level of the academic programme being pursued.

The Programme Coordinator for the respective programme will assist students in securing placement.



St Patrick's Pontifical University, Maynooth also offers a range of programmes from Diploma/Higher Diploma to Licentiate, Master's and Doctorate in Theology and Philosophy.

These Programmes are offered by our Postgraduate office, details are available online at sppu.ie/courses and in our Postgraduate Prospectus.

Disclaimer: The information contained in this publication is intended as a guide for those seeking admission to St Patrick's Pontifical University and does not constitute a contract or any terms thereof between the University and any intending applicant or any third party. Neither is it intended to give rise to legal obligations of any kind on the part of the University or its employees. The University reserves the right at any time, or from time to time, to cancel, revise, amend, or alter programmes of study and academic regulations. The University is not responsible for and shall not be bound by any errors in, or omissions from this publication.



Maynooth Centre for Mission & Ministries

Staying in touch

St Patrick's Pontifical University
Maynooth
Co. Kildare
W23 TW77
Ireland

T +353 (0)1 708 4778

E mcomm@spcm.ie

Sign up to our newsletters at
sppu.ie/newsletters

sppu.ie

[f](#) [v](#) [X](#) [@](#) [in](#)